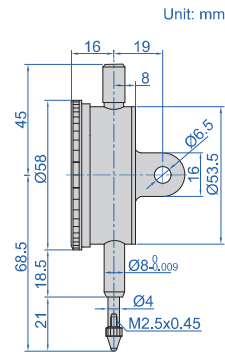


SHOCKPROOF DIAL INDICATORS

- Meet DIN878
- Shockproof
- Jeweled bearing
- Supplied with limit pointers and bezel clamp
- Optional accessory: backs , contact points



2314-10A



Code	Range	Graduation	Accuracy	Hysteresis	Range/rev	Dial reading	Maximum measuring force	Cap	Remark
2314-3FA*	3mm	0.01mm	12μm	3μm	1mm	0-100	1.5N	can lift	flat back
2314-5FA*	5mm	0.01mm	14μm	3μm	1mm	0-100	1.5N	can lift	flat back
2314-10FA*	10mm	0.01mm	17μm	3μm	1mm	0-100	1.5N	can lift	flat back
2314-3A*	3mm	0.01mm	12μm	3μm	1mm	0-100	1.5N	can lift	lug back
2314-5A*	5mm	0.01mm	14μm	3μm	1mm	0-100	1.5N	can lift	lug back
2314-10A*	10mm	0.01mm	17μm	3μm	1mm	0-100	1.5N	can lift	lug back

* Supplied with manufacturer inspection certificate