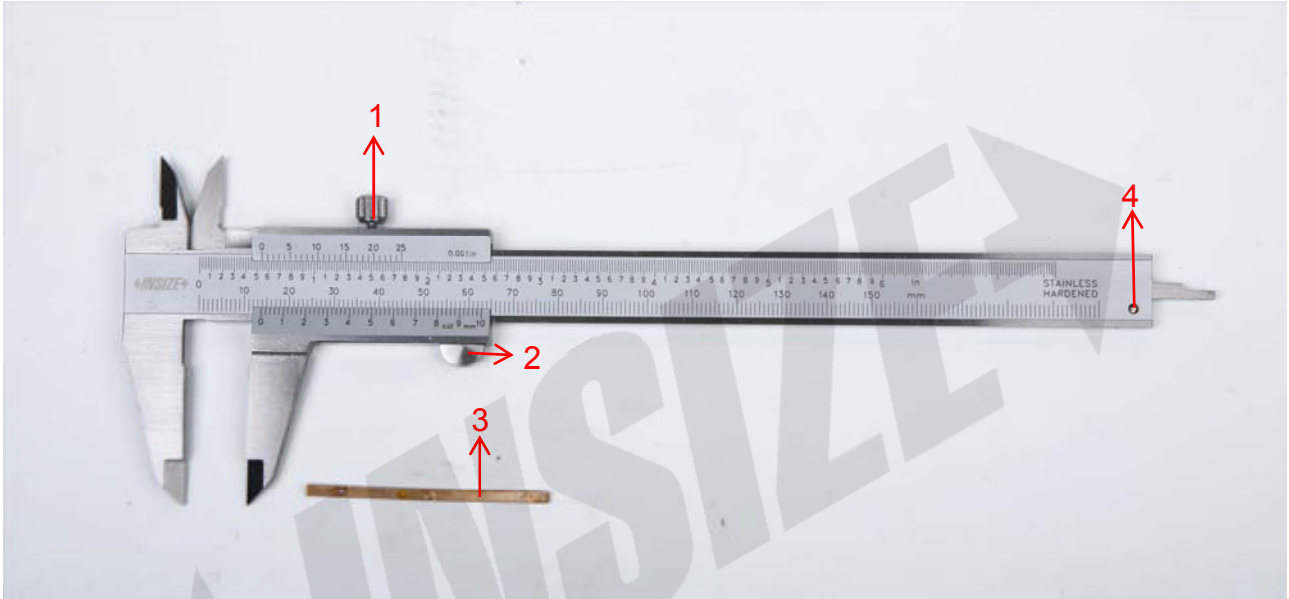


Spare parts for vernier caliper 1205 series



| Part NO. | Code | Description |
|----------|--------------------|--------------------------|
| 1 | SP-LOCK-D3-150/200 | Locking screw(-150/-200) |
| | SP-LOCK-D4-300 | Locking screw(-300) |
| 2 | SP-HANDLE-1205-S | Handle |
| 3 | SP-STRIP-1205-S | Copper strip(-150) |
| | SP-STRIP-1205-S-1 | Copper strip(-200) |
| | SP-STRIP-1205-S-2 | Copper strip(-300) |
| 4 | SP-SCREW-1205-3 | Stop screw |