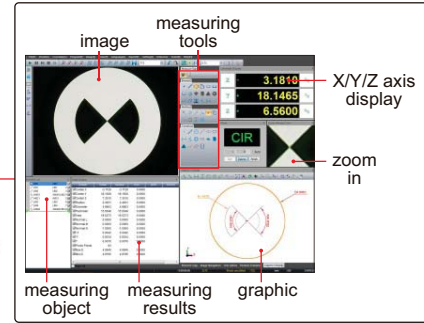


# VISION MEASURING SYSTEMS



lens with coaxial light (optional, must be installed in factory)

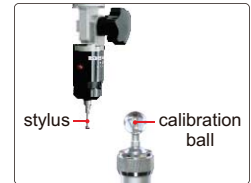


ISD-V250A

computer is included

## SPECIFICATION

Code	ISD-V150A	ISD-V250A	ISD-V300A	ISD-V400A
Measuring range (X×Y×Z)	150×100×200mm	250×150×200mm	300×200×200mm	400×300×200mm
Stage size	354×228mm	450×280mm	500×330mm	606×466mm
Stage glass size	210×160mm	306×196mm	350×250mm	450×350mm
Resolution of X/Y/Z axis	0.5μm			
Accuracy of X/Y axis	≤(2.5+L/100)μm (L is the measuring length in mm)			
Repeatability of X/Y axis	2μm			
Objective	0.7X~4.5X (zoom)			
Working distance	92mm			
Magnification	33X~195X (on 19" monitor)			
Camera	1/3" color CCD, 0.3M pixel			
Illumination	surface and contour with adjustable LED			
Max. height of workpiece	160mm			
Max. weight of workpiece	20kg			
Operation system	Windows 7/8/10			
Drive method	manual			
Power supply	110/220V, 50/60Hz			
Dimension (L×W×H)	560×540×850mm	760×600×900mm	760×600×900mm	970×670×940mm
Weight	100kg	120kg	140kg	240kg



probe (optional), includes Ø2mm and Ø3mm styli, Ø25mm calibration ball, measuring accuracy is 10μm

## STANDARD DELIVERY

Main unit	1 pc
Computer	1 pc
Calibration glass chart	1 pc
Clay	1 pc
Foot switch	1 pc
Anti-dust cover	1 pc

## SOFTWARE

- Operation system: Windows 7/8/10
- Language: English
- Single measuring tools:

measure coordinate of point	measure center coordinate, diameter and area of circle
measure distance of two elements	measure length, width and diameter of key slot
measure focus distance of surface	measure length, width and area of rectangle
measure distance between two points	measure length and diameter of arc
measure width and diameter of ring	measure length and area of closed curve
measure angle of two lines	measure center coordinate and axis length of ellipse
measure length of open curve	

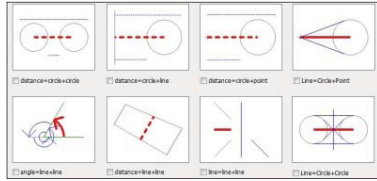
## OPTIONAL ACCESSORY

0.5X auxiliary objective	Code: <b>ISD-V-OB05X</b> Working distance: 175mm Magnification: 16.5~97.5X (on 19" monitor)
2X auxiliary objective	Code: <b>ISD-V-OB2X</b> Working distance: 36mm Magnification: 66~390X (on 19" monitor)
Probe	Code: <b>ISD-V-PROBE</b> Includes Ø2mm and Ø3mm styli, Ø25mm calibration ball
Vision measuring system with coaxial light lens (with computer)	Code: <b>ISD-V150ACL, ISD-V250ACL, ISD-V300ACL, ISD-V400ACL</b>

To be continued

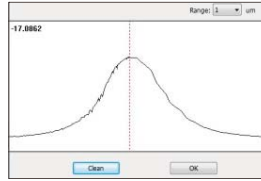
Continued from previous page

■ **Combined measuring tools:**

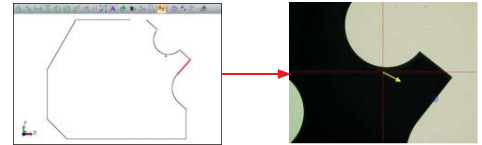


measure distance and angle of two elements

■ **Focus indicator:**

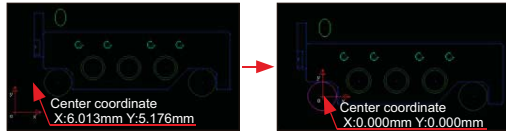


■ **CAD measuring:**



Input CAD drawing and set reference, move the stage to make the target box in the center of crosshair, then the software will do automatic measurement

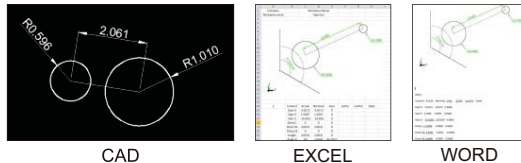
■ **Coordinate transfer:**



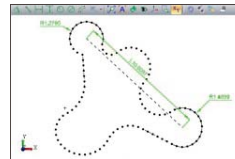
■ **Edge-detection:**



■ **Data export to CAD, EXCEL and WORD:**



■ **Contour scanning:**



■ **Profile detection:**

