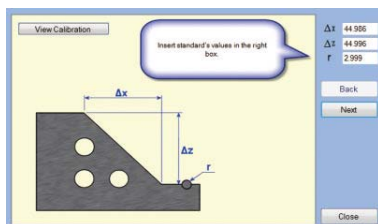
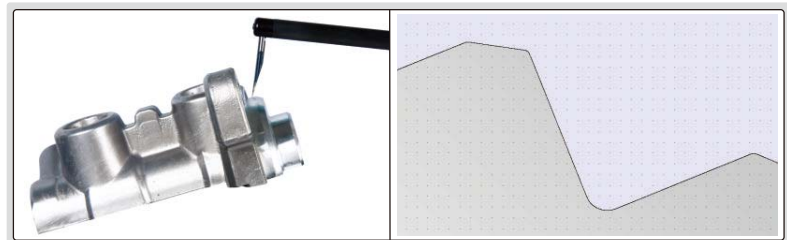


# CONTOUR MEASURING MACHINE CODE ISQ-PGS200

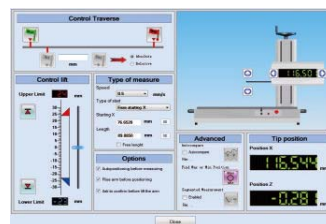
PROGRAMMABLE FOR  
AUTOMATIC CYCLE MEASURING



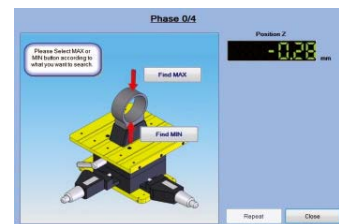
- Include the software, for contour measurement and data output
- Programmable for automatic cycle measuring, automatically scan contour, mark dimensions, make report, save and print results)
- Operation system: Windows XP, Windows Vista, Windows 7, Windows 8, Windows 8.1
- Output as format pdf, jpg, dxf, etc.



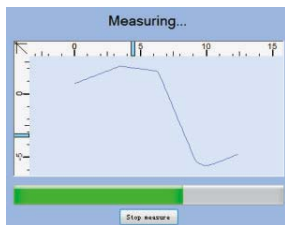
calibration



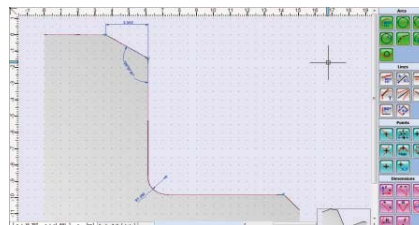
measurement setting



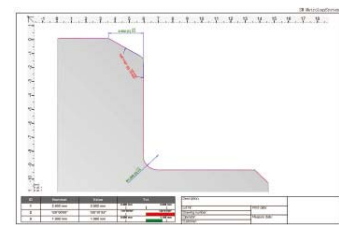
find maximum/minimum position



contour scanning



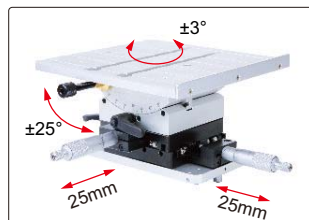
dimension measurement



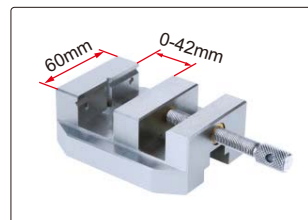
data output



calibration block (optional)



4 axis stage (optional)



vise (optional)



standard probe (length 32mm, included)

To be continued

Continued from previous page

## CONTOUR MEASURING MACHINE CODE ISQ-PGS200

### SPECIFICATION

<b>X axis</b>	<b>Measuring range</b>	200mm
	<b>Resolution</b>	0.5μm
	<b>Accuracy</b>	±(1+L/80)μm, L is the measuring length in mm
<b>Z axis</b>	<b>Measuring range</b>	50mm
	<b>Resolution</b>	0.2μm
	<b>Accuracy</b>	±(1+H/30)μm, H is the measuring height in mm
<b>Traverse speed</b>		0~10mm/s
<b>Measuring speed</b>		0.2mm/s, 0.5mm/s, 1mm/s, 2mm/s
<b>Radius of probe tip</b>		20μm
<b>Measuring unit</b>		mm/inch
<b>Traverse direction</b>		backward
<b>Measuring force</b>		30mN
<b>Traceable angle</b>		75°(upward), 85°(downward)
<b>Travel of Z axis</b>		300mm
<b>Dimension (L×W×H)</b>		1100×570×720mm
<b>Power supply</b>		110~240V/50 ~ 60Hz
<b>Weight</b>		42kg



software CD (included)

### STANDARD DELIVERY

<b>Main unit</b>	1pc
<b>Standard probe (ISQ-PGS-T01)</b>	1pc
<b>Software</b>	1pc
<b>USB cable</b>	1pc

### OPTIONAL ACCESSORY

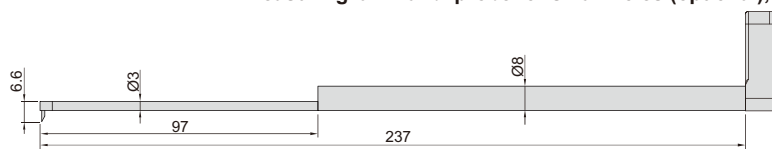
<b>Calibration block</b>	ISQ-PGS-CLB
<b>4 axis stage</b>	ISQ-PGS-TABLE
<b>Vise</b>	ISQ-PGS-VISE
<b>Probe</b>	see details

### SPECIFICATION OF PROBES

Unit: mm

<p><b>chisel probes</b></p> <p>code ISQ-PGS-T01 (L=32mm, included) code ISQ-PGS-T02 (L=22mm, optional) code ISQ-PGS-T03 (L=52mm, optional) code ISQ-PGS-T04 (L=42mm, optional)</p>	<p><b>Ø1mm ruby ball probe</b></p> <p>code ISQ-PGS-R01 (optional)</p>	<p><b>Ø2mm ruby ball probe</b></p> <p>code ISQ-PGS-R02 (optional)</p>	<p><b>carbide ball probe</b></p> <p>code ISQ-PGS-C01 (Ø1mm ball, optional) code ISQ-PGS-R02 (Ø2mm ball, optional)</p>
--	---	---	---

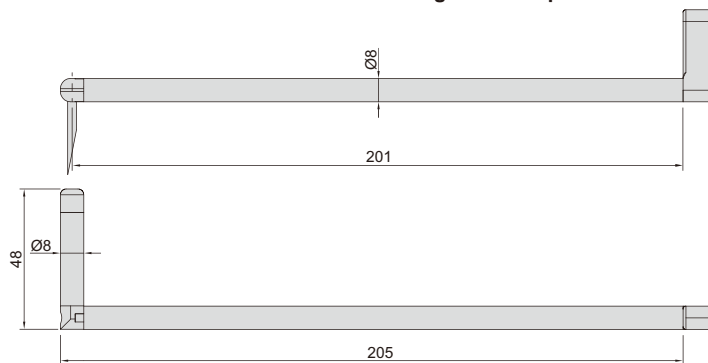
### measuring arm and probe for small holes (optional), code



measure the contour of holes with diameter > Ø8mm



### transverse measuring arm and probe ISQ-PGS-T01 (optional), code ISQ-PGS-LP



measure the contour of holes in radial direction

