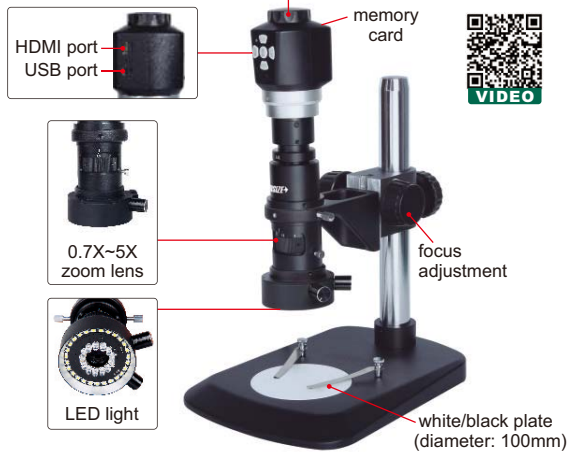
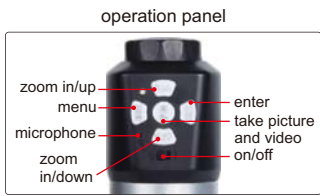
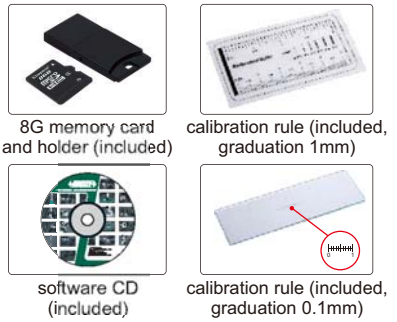


# DIGITAL MEASURING MICROSCOPE CODE ISM-DM40

TAKE PICTURES AND VIDEOS    MEASUREMENT (ON COMPUTER)    FOCUS DISTANCE OF CAMERA IS ADJUSTABLE

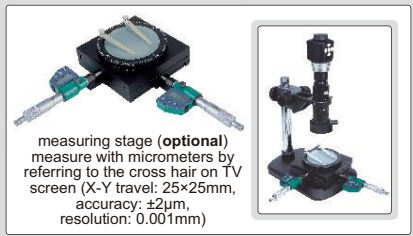
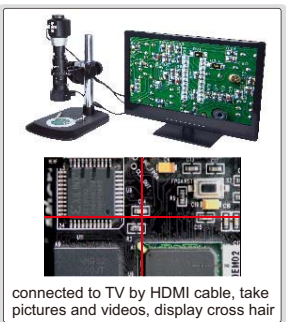


- Connected to TV and computer
- Take pictures and videos, saved to memory card
- Measurement on computer with accuracy  $\pm 0.01\text{mm}$
- Large working distance because focus distance of camera is adjustable
- Automatic white balance and exposure, white-black display mode
- Automatic power off



## SPECIFICATION

Magnification	15X~205X (on 19" monitor)	
Pixel	3.5M	
Sensor	1/3" CMOS	
Resolution	HDMI output	1920×1080, 1280×720, 640×480
	picture	2304×1536, 2304×1296, 1920×1080, 1280×720, 800×480
	video	1920×1080, 1280×720, 800×480
Output	USB/HDMI	
Power supply	5V (>500mA)	
Dimension (L×W×H)	273×205×310mm	
Weight	3.5kg	



## STANDARD DELIVERY

Main unit	1pc
8G memory card and holder	1pc
HDMI cable (for TV)	1pc
USB cable and software (for computer)	1pc
Calibration rule (graduation 0.1mm)	1pc
Calibration rule (graduation 1mm)	1pc

## LENS SCALE, MAGNIFICATION AND FOCUS DISTANCE

Lens scale	Magnification (on 19" monitor)	Focus distance (mm)
0.7X	15~40X	24~252
1X	30~50X	27~155
2X	70~80X	81~117
3X	110~120X	94~111
4X	140~160X	101~110
5X	180~205X	103~109

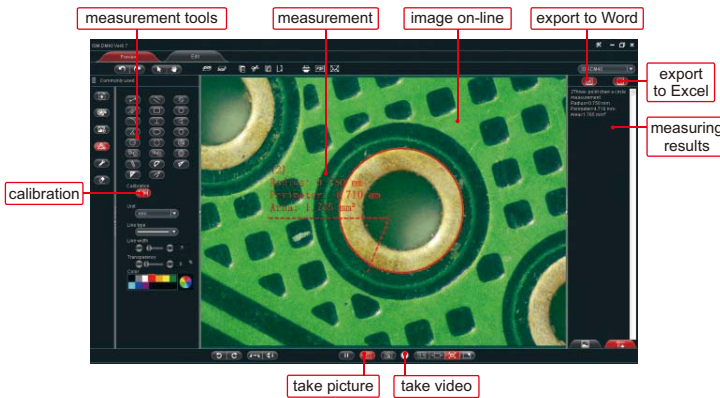
## MAGNIFICATION, VIEW FIELD AND FOCUS DISTANCE

Magnification (on 19" monitor)	View field (mm)	Focus distance
15X	28×16	252mm
30X	13.5×7.5	155mm
50X	8×4.8	124mm
100X	4.2×2.4	110mm
150X	2.7×1.5	108mm
200X	2.1×1.2	105mm

## OPTIONAL ACCESSORY

Measuring stage	ISM-DM40-STAGE
-----------------	----------------

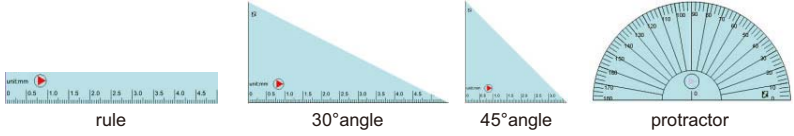
## SOFTWARE FOR COMPUTER



- **Language:** Chinese, English, Japanese, German, French
- **Operation system:** Windows XP/7/8/10
- **Measurement tools:**
  - measure length of continuous line
  - measure radius, length and angle of arc
  - measure angle with three points
  - measure distance between two circles
  - measure distance between point and line
  - measure angle with two lines
  - measure radius, girth and area of circle
  - measure length of line or distance between two points
  - measure distance between two parallel lines
  - measure length, width, girth and area of rectangle
  - measure center distance between parallel lines
  - measure axis lengths, girth and area of ellipse
  - measure circumference and area of polygon

## Comparison tools:

Create rule, angle or protractor, to compare with workpieces.



## Data export to Word or Excel:

