

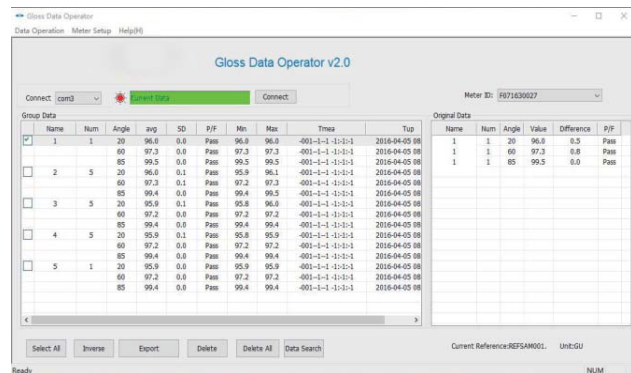
# 20°/60°/85° GLOSS METER PART NO. ISQ-DG8

DATA  
OUTPUT



base with calibration block (included)

- To test the gloss of coating, such as painting, varnish, printing ink, etc.
- To test the material surfaces, such as metal, granite, ceramic, plastic, paper, etc.
- According to ISO 2813, ASTM D2457, ASTM D523
- Memory of 10000 measurement results for browsing and output
- Automatic power off



software (included), output to Excel

## SPECIFICATION

Incidence angle	20°	60°	85°
Measuring range	0 ~ 2000GU	0 ~ 1000GU	0 ~ 160GU
Resolution	0.1GU (range≤119.9GU)		
	1GU (range>119.9GU)		
Accuracy	±1.5GU (range≤119.9GU)		
	±1.5% (range>119.9GU)		
Repeatability	0.2GU (range≤119.9GU)		
	0.2% (range>119.9GU)		
Zero set error	0.2GU		
Measuring area	.39×.35"	.63×.35"	1.54×.20"
Power supply	1×1.5V AA battery		
Dimension	6.10×1.89×2.95"		
Weight	.88lb		

## STANDARD DELIVERY

Main unit	1pc
Base with calibration block	1pc
USB cable and software	1pc