

**ATTENTION: NOT FOR MEASUREMENT,
NOT SUITABLE FOR COMPUTERS**

TV DIGITAL MICROSCOPES

stand (part no.
ISM-PM-STAND, optional)



- Connected to TV directly
- For observation, cannot take pictures and videos



ISM-TV200 (with wire)

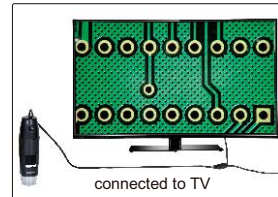


ISM-TV200W (wireless)

SPECIFICATION

Part No.	ISM-TV200	ISM-TV200W
Type	with wire	wireless (maximum transmission distance 200")
Magnification	10X~200X (on 17" TV)	
Pixel	0.35M	
Illumination	adjustable brightness LED	
Focus	supplied with focus ring, stand (ISM-PM-STAND) is optional	
Power supply	DC	built-in rechargeable battery

filter (optional)



MAGNIFICATION, FOCUS DISTANCE AND VIEW FIELD

ISM-TV200			ISM-TV200W		
Magnification	Focus distance	View field	Magnification	Focus distance	View field
50X	.83"	.32×.25"	60X	.75"	.27×.20"
100X	.51"	.15×.12"	80X	.63"	.20×.15"
150X	.63"	.10×.08"	150X	.63"	.10×.08"
200X	.75"	.07×.06"	200X	.75"	.07×.06"

OPTIONAL ACCESSORY

Green filter	ISM-PM-GREEN
Yellow filter	ISM-PM-YELLOW
Blue filter	ISM-PM-BLUE