

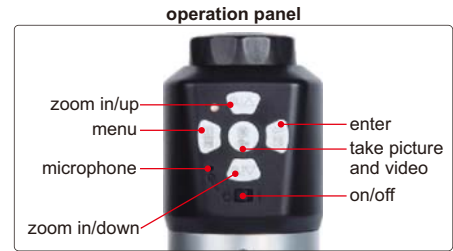
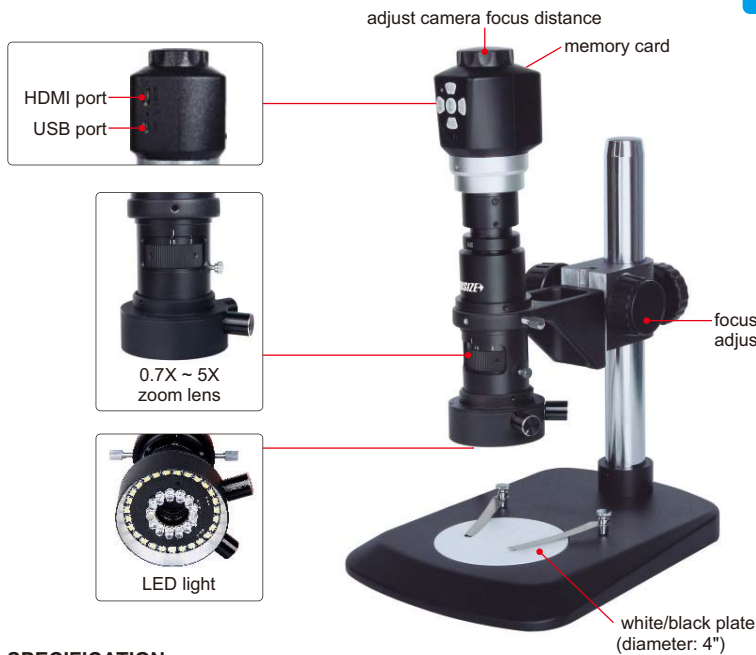
DIGITAL MEASURING MICROSCOPE

PART NO. ISM-DM40

FOCUS DISTANCE OF CAMERA IS ADJUSTABLE

MEASUREMENT (ON COMPUTER)

TAKE PICTURES AND VIDEOS



- Connected to TV and computer
- Take pictures and videos, saved to memory card
- Measurement on computer with accuracy ± 0.0004 "
- Large working distance because focus distance of camera is adjustable
- Automatic white balance and exposure, white-black display mode
- Automatic power off

SPECIFICATION

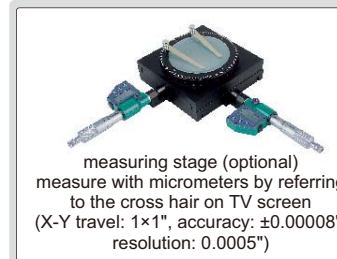
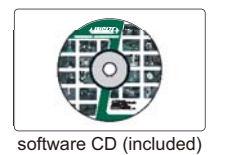
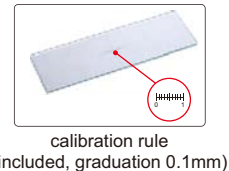
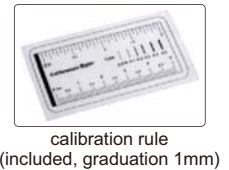
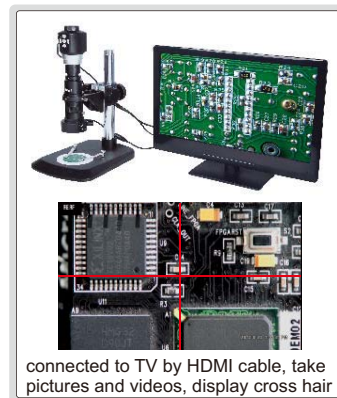
Magnification		15X~205X (on 19" monitor)
Pixel		3.5M
Sensor		1/3" CMOS
Resolution	HDMI output	1920×1080, 1280×720, 640×480
	picture	2304×1536, 2304×1296, 1920×1080, 1280×720, 800×480
	video	1920×1080, 1280×720, 800×480
Output		USB/HDMI
Power supply		5V (>500mA)
Dimension (L×W×H)		10.75×8.07×12.2"
Weight		7.78lb

LENS SCALE, MAGNIFICATION AND FOCUS DISTANCE

Lens scale	Magnification (on 19" monitor)	Focus distance
0.7X	15~40X	.94~9.92"
1X	30~50X	1.06~6.1"
2X	70~80X	3.19~4.61"
3X	110~120X	3.7~4.37"
4X	140~160X	3.97~4.33"
5X	180~205	4.05~4.29"

MAGNIFICATION, VIEW FIELD AND FOCUS DISTANCE

Magnification (on 19" monitor)	View field	Focus distance
15X	1.1×.63"	9.92"
30X	.53×.32"	6.1"
50X	.31×.19"	4.88"
100X	.16×.09"	4.33"
150X	.11×.06"	4.25"
200X	.08×.05"	4.13"



To be continued

Continued from previous page

**DIGITAL MEASURING MICROSCOPE
PART NO. ISM-DM40**

STANDARD DELIVERY

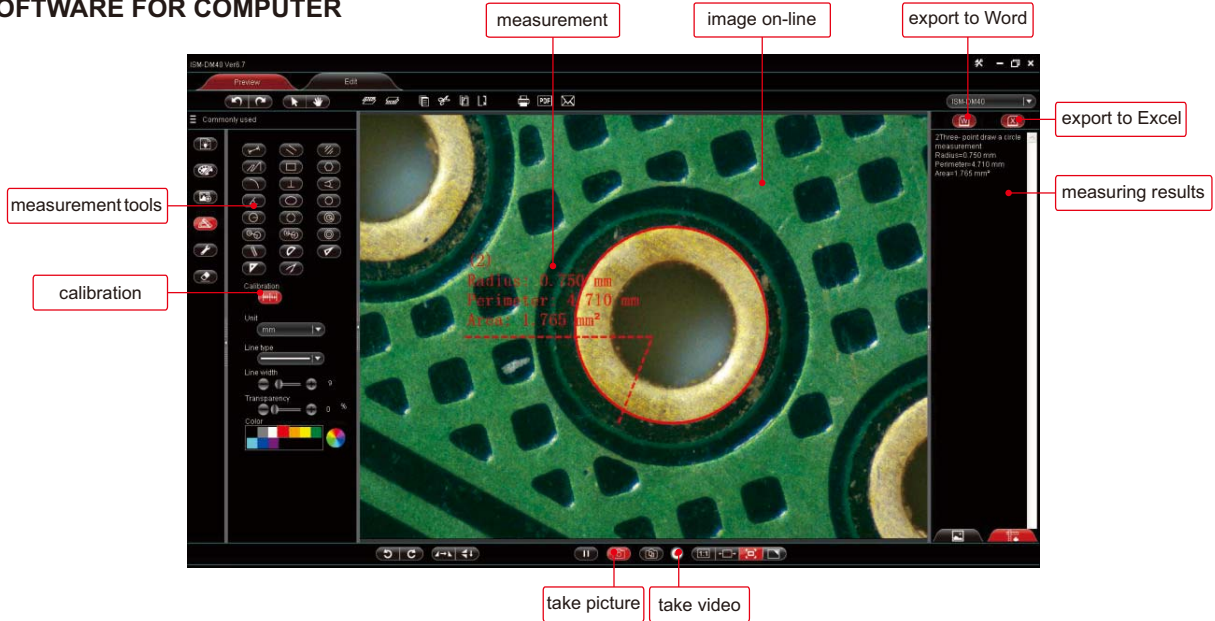
Main unit	1pc
8G memory card and holder	1pc
HDMI cable (for TV)	1pc

USB cable and software (for computer)	1pc
Calibration rule (graduation 0.1mm)	1pc
Calibration rule (graduation 1mm)	1pc

OPTIONAL ACCESSORY

Measuring stage	ISM-DM40-STAGE
-----------------	----------------

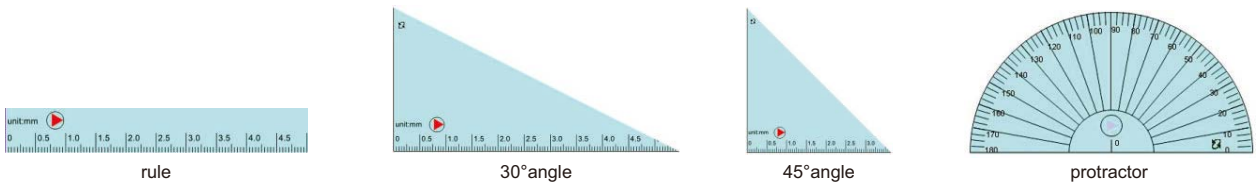
SOFTWARE FOR COMPUTER



- **Language:** Chinese, English, Japanese, German, French
- **Operation system:** Windows XP/7/8/10
- **Measurement tools:**

	measure length of line or distance between two points		measure distance between two parallel lines		measure center distance between parallel lines
	measure length of continuous line		measure length, width, girth and area of rectangle		measure circumference and area of polygon
	measure radius, length and angle of arc		measure distance between point and line		measure angle with two lines
	measure angle with three points		measure axis lengths, girth and area of ellipse		measure radius, girth and area of circle
	measure distance between two circles				

- **Comparison tools:**
Create rule, angle or protractor, to compare with workpieces.



- **Data export to Word or Excel:**

