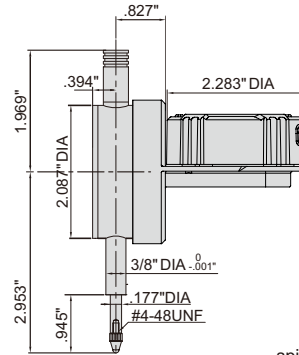


BACK PLUNGER TYPE ELECTRONIC INDICATOR



DATA OUTPUT



spindle lift knob is included

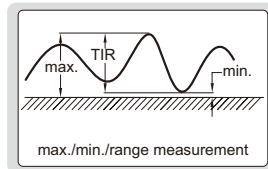


warning when over tolerance

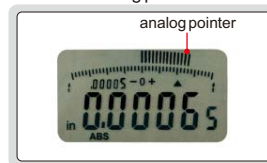


2118-10E

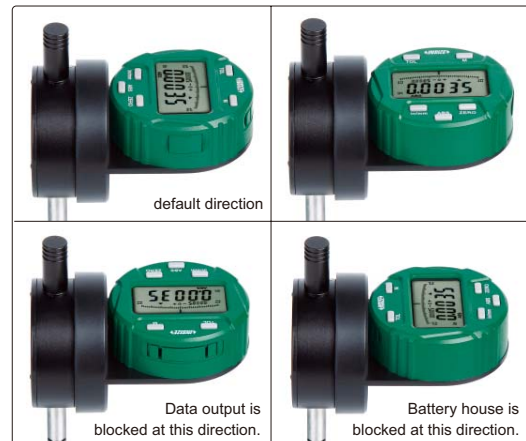
max./min./TIR



analog pointer



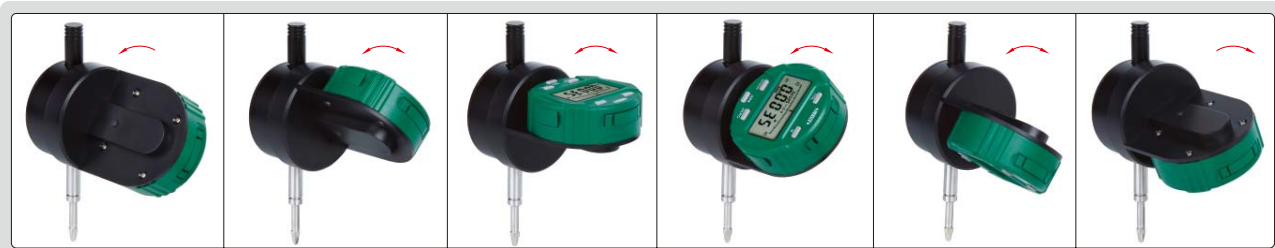
display direction is changeable



- Display can rotate 320°, display direction is changeable
- Reading in digit and analog
- Meet ASME B89.1.10-2001
- Button function: tolerance Go and No-Go display, data preset, measuring direction change, max./min./TIR measurement, inch/metric conversion, absolute/incremental measurement
- Keep preset data and tolerance data in memory after restart
- CR2032 battery, automatic power off
- Data output
- Optional accessory: data output cable (part no. 7306-40, 7302-SPC3A, 7305-SPC1A), backs, contact points

Remark: To change above direction, 4 fixing screws on the back of display need to be removed first.

display can rotate 320°



Part No.	Range	Resolution	Accuracy	Hysteresis	Remark
2118-10E *	.5"/12.7mm	.0005"/0.01mm	±.0015"	.0005"	flat back
2118-101E *	.5"/12.7mm	.00005"/0.001mm	±.00015"	.00005"	flat back

* Supplied with manufacturer inspection certificate traceable to NIST USA