

AUTOMATIC SCANNER MEASURING SYSTEM CODE RBT-LSM01

- 6-axis flexible collaborative robot
- High-precision rotary table
- Automated, digital inspection
- Easy to move, highly maneuverable
- One-button startup for easy operation
- High speed, high efficiency and easy to extend



OPERATION PROCESS



AUTOMATIC CALIBRATION

- Step 1: Click "One-Click Calibration" on the interface
- Step 2: Press the start button
- Step 3: Automatic calibration
- Step 4: Calibration complete
- Step 5: Load calibration parameters

SCAN TEST PROCEDURE

- Step 1: An operator manually places the workpiece onto the scanning fixture
- Step 2: Press the start button on the machine
- Step 3: The robotic arm carries the scanner to perform automated scanning
- Step 4: The electric turntable rotates in coordination with the scanner to complete the automated scanning process
- Step 5: The scanned data is automatically imported into the measurement software for processing, and an inspection report is generated.

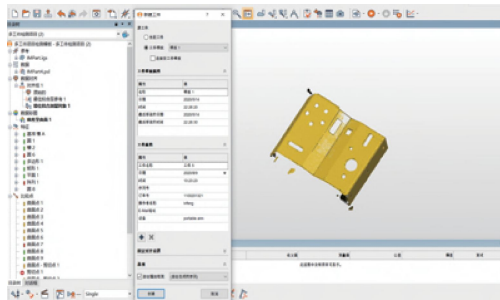
SPECIFICATION

Robot	robot arm spreading	919 mm
	number of control axis	6
	Max weight of workpiece	4kg
	repeat positioning accuracy	±0.03mm
	terminal speed	2mm/s
	IP rating	IP54
Scanner	Max scanning speed	5400000 measurements/s
	Max resolution	0.01mm
	volume accuracy	0.015mm+0.035mm/m
	Max scanning field	650mm×550mm
	depth of field	550mm
	operating temperature	-10°C~40°C
Rotary table	table size	Ø350mm
	angle range	360°
	Max weight of workpiece	30kg
	resolution	0.01°
	positioning accuracy	≤0.05°
	repeat positioning accuracy	≤0.003°
Power supply	220V, 50Hz, 3000W	
Dimension (L×W×H)	1500×1000×1400mm	
Net weight	300kg	

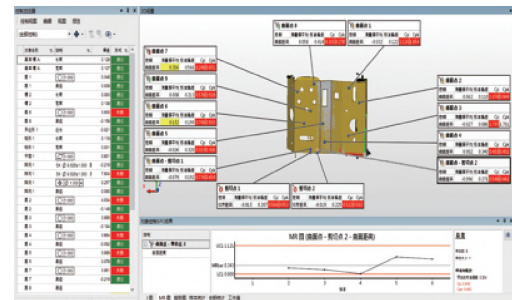
STANDARD DELIVERY

Robot system	robot main body
	robot control cabinet
	robot control software
Scanner main unit	1 set
Computer and monitor	1 set
Scanning software	1 set
Scanner fixture	1 set
High-precision rotary table	1 set
Measuring station trolley	1 set
Automated measurement software	1 set

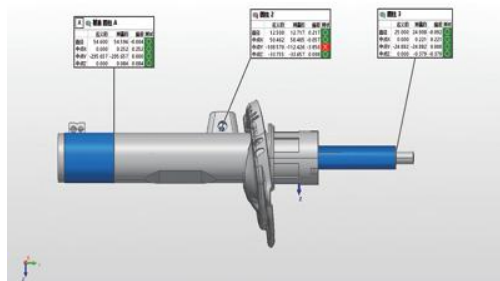
MEASUREMENT SOFTWARE (INCLUDED)



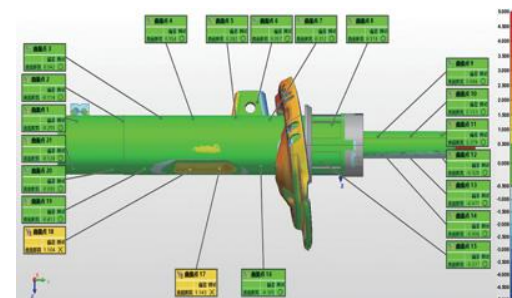
first-piece measurement and programming



batch testing



sample report



sample report