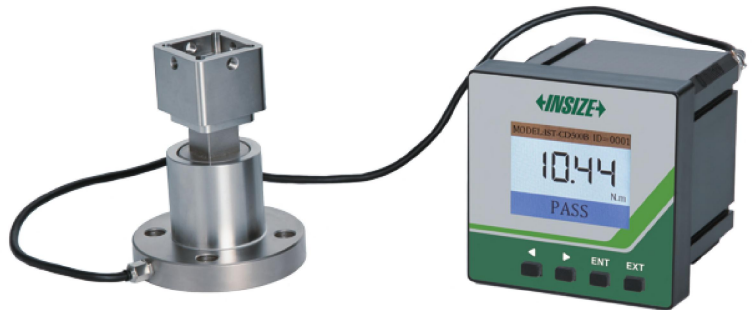


# TORQUE TESTERS FOR ELECTRIC SCREWDRIVERS

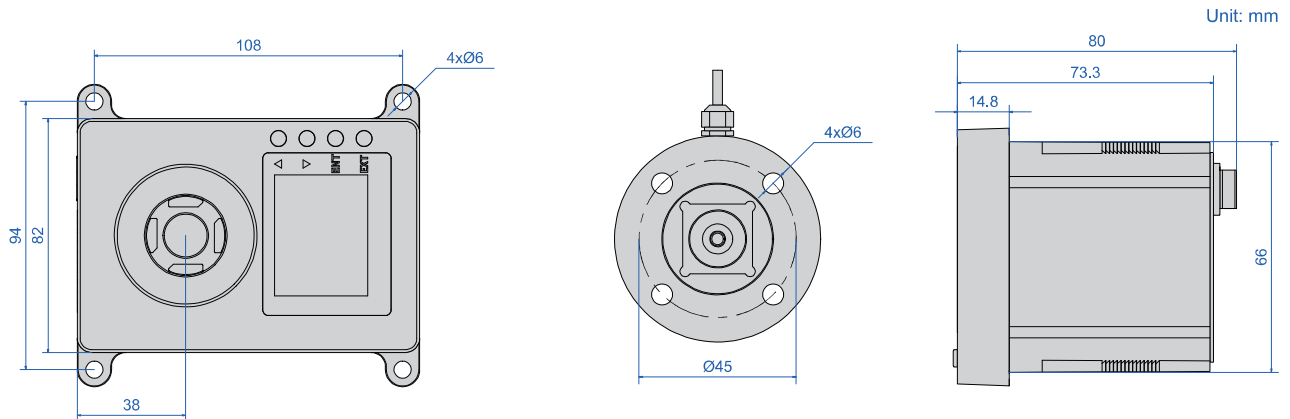
ATTENTION: NOT SUITABLE FOR HIGH SPEED SHOCK TORQUE MEASUREMENT



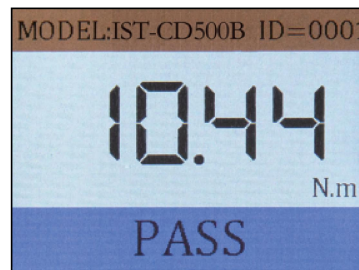
IST-CD50A



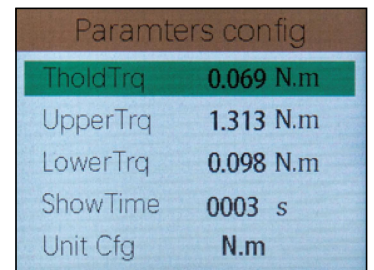
IST-CD500B



- Compatible with all electric screwdrivers
- Widely used in manufacturing sectors such as 3C, new energy, automotive parts and etc.
- Compact in size, extremely easy to integrate, and designed specifically for automated assembly lines
- High measurement accuracy and excellent repeatability
- Set upper and lower tolerance limits and output pass/fail signals via I/O ports which can be connected to external alarm indicator or PLC
- Support multiple standard communication protocols and compatible with mainstream communication ports such as RS485 and RS232, provide output of data such as real-time torque and peak torque
- 2.0-inch TFT high-definition color screen
- Unit: N.m, mN.m, lbf.in, kgf.cm
- Auto-zero and adjustable peak hold time



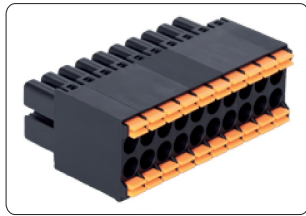
main interface



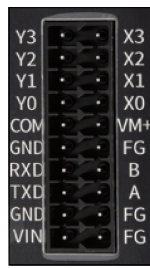
parameter setting interface

## SPECIFICATION

Code	IST-CD08A	IST-CD50A	IST-CD100A	IST-CD02B	IST-CD08B	IST-CD50B	IST-CD100B	IST-CD500B
Type	A (integrated type)			B (split type, embedded mounting of display meter)				
Optimal measurement range	0.08~0.8N.m 0.8~8kgf.cm	0.5~5N.m 5~50kgf.cm	1~10N.m 10~100kgf.cm	0.02~0.2N.m 0.2~2kgf.cm	0.08~0.8N.m 0.8~8kgf.cm	0.5~5N.m 5~50kgf.cm	1~10N.m 10~100kgf.cm	5~50N.m 50~500kgf.cm
Resolution	0.0001N.m 0.001kgf.cm	0.001N.m 0.01kgf.cm	0.01N.m 0.1kgf.cm	0.0001N.m 0.001kgf.cm	0.0001N.m 0.001kgf.cm	0.001N.m 0.01kgf.cm	0.01N.m 0.1kgf.cm	0.01N.m 0.1kgf.cm
Accuracy	±1% of indicated value							
DC power supply	DC 12V, 160mA, 3W							
Adapter power supply	AC 100~240V, 50/60Hz							
Dimension	120×106×51mm			59×59×77mm (sensor); 74×80×74mm (display meter)				
Net weight	435g			615g				



terminal block (included)



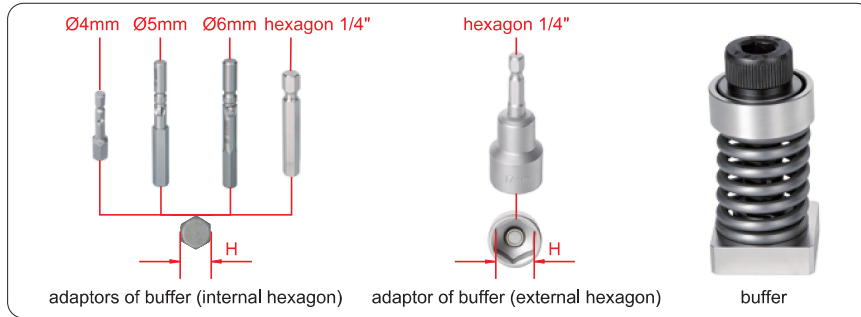
IO output and communication ports (included)  
type A (side view)



IO output and communication ports (included)  
type B (back view)



ethernet communication (optional)



buffer (optional)  
**IST-CD-BF2**  
type A



buffer test example

#### BUFFER (OPTIONAL) SPECIFICATION

Code	Type	Screw size	Screw head shape	Opposite sides of hexagon (H)	Applicable torque capacity	Dimension
IST-CD-BF1	type A (spring-loaded cushioning to gradually increase torque)	M4	internal hexagon	3mm	0.3~3kgf.cm	20×20×36mm
IST-CD-BF2		M8	internal hexagon	6mm	3~10kgf.cm	27.5×27.5×51mm
IST-CD-BF3		M8	internal hexagon	6mm	10~100kgf.cm	27.5×27.5×52.5mm
IST-CD-BF4		M10	external hexagon	17mm	100~500kgf.cm	35×35×58.5mm



buffer (optional)  
**IST-CD-BF7**  
type B



buffer test example

#### BUFFER (OPTIONAL) SPECIFICATION

Code	Type	Material	Simulated thread hole size	Dimension
IST-CD-BF5*	type B (simulate real screws to quickly increase torque)	6061 aluminum alloy	M1×0.25, M1.2×0.25, M1.6×0.35, M2×0.4, M2.5×0.45	20×20×20mm
IST-CD-BF6*		6061 aluminum alloy	M1.4×0.3, M1.6×0.35, M1.7×0.35, M2×0.4, M2.5×0.45	20×20×20mm
IST-CD-BF7*		304 stainless steel	M2.5×0.45, M3×0.5, M4×0.7, M5×0.8, M6×1.0	20×20×20mm

\* Other thread hole size can be customized

#### STANDARD DELIVERY

Main unit	1 pc
Power adapter	1 pc
Terminal block	1 pc

#### OPTIONAL ACCESSORY

Ethernet communication	IST-CD-ENT
Buffer	details refer to the description above