

CAN BE OPERATED BY  
COMPUTERS OR MOBILE PHONES

**BLUETOOTH**

software flash disk  
(included)



connect to mobile phone via bluetooth  
(only Android system)



operate and output data by mobile phone

connect to computer via bluetooth or USB cable

bluetooth receiver  
(included)



- To test the gloss of coating, such as painting, varnish, printing ink, etc.
- To test the material surfaces, such as metal, granite, ceramic, plastic, paper, etc.
- According to ISO 2813, ASTM D2457, ASTM D523
- Memory of 10000 measurement results for browsing and output
- Automatic power off

**SPECIFICATION**

	20°	60°	85°
<b>Incidence angle</b>	20°	60°	85°
<b>Measuring range</b>	0~2000GU	0~1000GU	0~160GU
<b>Resolution</b>	0.1GU (range≤119.9GU)		
	1GU (range>119.9GU)		
<b>Accuracy</b>	±1.5GU (range≤119.9GU)		
	±1.5% (range>119.9GU)		
<b>Repeatability</b>	0.2GU (range≤119.9GU)		
	0.2% (range>119.9GU)		
<b>Zero set error</b>	0.2GU		
<b>Measuring area</b>	10×9mm	16×9mm	39×5mm
<b>Output</b>	USB and bluetooth		
<b>Power supply</b>	1×1.5V AA battery		
<b>Dimension</b>	155×48×75mm		
<b>Weight</b>	400g		

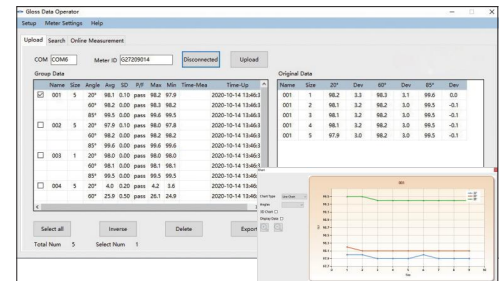
**20°/60°/85° GLOSS METER  
CODE ISQ-DG8**



**DATA  
OUTPUT**



base with calibration block  
(included)



software (included), test can be controlled from the software,  
display test data, output to Excel

**STANDARD DELIVERY**

<b>Main unit</b>	1 pc
<b>Base with calibration block</b>	1 pc
<b>Software and USB cable</b>	1 pc
<b>Bluetooth receiver</b>	1 pc