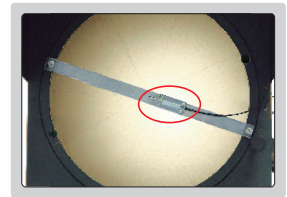


# PROFILE PROJECTORS



edge detector (for ISP-A6000E)

### digital readout



ISP-A6000 (without edge detector)

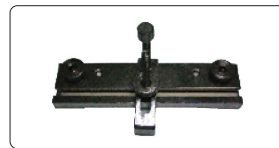
### OPTIONAL ACCESSORY



lens



rotary table  
(glass plate diameter 100mm)



holder with clamp



printer



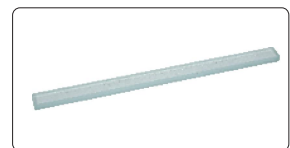
green/yellow filter



50mm reading scale  
(check magnification accuracy)



demo sample



300mm calibration scale (check magnification accuracy together with 50mm reading scale or calibrate measuring accuracy)










swivel center support



V-block set

**SPECIFICATION**

<b>Code</b>		<b>ISP-A6000</b>	<b>ISP-A6000E</b>			
<b>Edge detector</b>		not included	included			
<b>Projector screen</b>		diameter: Ø600mm				
		rotation range: 0°~360°, resolution: 1" or 0.01°				
		reference lines: cross-hairs				
<b>Lens</b>	<b>magnification</b>	5X (optional)	10X (included)	20X (optional)	50X (optional)	100X (optional)
	<b>view field</b>	Ø120mm	Ø60mm	Ø30mm	Ø12mm	Ø6mm
	<b>working distance</b>	242.8mm	143.2mm	85.5mm	92mm	48.5mm
<b>Magnification accuracy</b>		±0.08%				
<b>Image</b>		erect image				
<b>Stage</b>	<b>metal stage size</b>	404×265mm				
	<b>glass stage size</b>	270×170mm				
	<b>X-Y stage travel</b>	range: 200×100mm				
		resolution: 0.5µm				
	<b>Z (focus) travel range</b>	50mm				
<b>max. load capacity</b>	5kg					
<b>Illumination</b>		contour illumination: 24V/150W halogen lamp, brightness is adjustable				
		surface illumination: 24V/150W halogen lamp (with 2 fibers), position is adjustable				
<b>Data processing unit</b>	<b>display</b>	X-Y stage travel, screen rotation				
	<b>output</b>	RS232C, USB (data output to Excel)				
	<b>function</b>		measure coordinate of point			
			measure coordinate of line			
		measure center coordinate, radius of circle with three points				
		measure distance between two objects				
		measure angle with four points or two lines				
		coordinate transform				
	choose measurement object automatically according to the selective point and display the result					
<b>advanced function</b>	programming for batch measurements					
<b>Power supply</b>		220V, 50/60Hz				
<b>Dimension (L×W×H)</b>		1200×1140×1940mm				
<b>Net weight</b>		360kg				

**STANDARD DELIVERY**

<b>Main unit</b>	1 pc
<b>10X lens</b>	1 pc
<b>Foot-switch</b>	1 pc
<b>Software (only for ISP-A6000E) and USB cable</b>	1 pc
<b>Overlay chart clip</b>	4 pcs
<b>Anti-dust cover</b>	1 pc

**OPTIONAL ACCESSORY**

<b>5X lens</b>	<b>ISP-A6000-LENS5X</b>
<b>20X lens</b>	<b>ISP-A6000-LENS20X</b>
<b>50X lens</b>	<b>ISP-A6000-LENS50X</b>
<b>100X lens</b>	<b>ISP-A6000-LENS100X</b>
<b>Rotary table</b>	<b>ISP-A6000-TABLE</b>
<b>Holder with clamp</b>	<b>ISP-A1000-HOLDER</b>
<b>Printer</b>	<b>ISP-A1000-PRINTER</b>
<b>Yellow filter</b>	<b>ISP-A6000-YE-FILTER</b>
<b>Green filter</b>	<b>ISP-A6000-GR-FILTER</b>
<b>50mm reading scale</b>	<b>ISP-A1000-SCALE50</b>
<b>Demo sample</b>	<b>ISP-A1000-DEMO</b>
<b>300mm calibration scale</b>	<b>ISP-A1000-RULE</b>
<b>Swivel center support</b>	<b>ISP-A1000-SUPPORT</b>
<b>V-block set</b>	<b>6896-12</b>