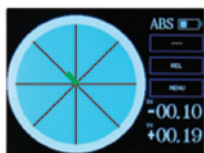


DIGITAL LEVEL CODE ISE-2DT

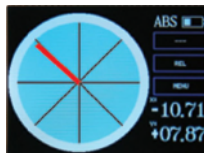
DATA
OUTPUT



- Color LCD, touch panel
- X-Y axis measurement
- Set the tolerance and the display is shown in different colors

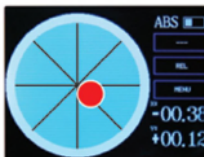


within the tolerance (green)

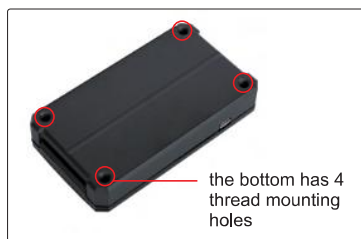


out of the tolerance (red)

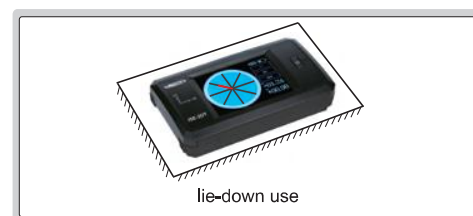
- To show the incline with line or bubble



charging and
data output



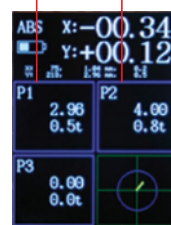
the bottom has 4
thread mounting
holes



"FLAT" mode is used to adjust level for the 4-leg machines
enter the size of table, the height to be adjusted for 3 feet is directly
displayed

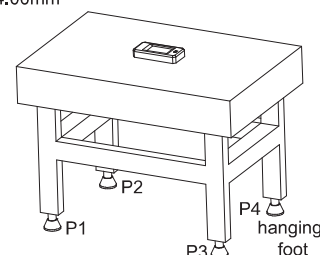
P1 need raise 2.96mm

P2 need raise 4.00mm



P4 is hanging foot

P3 no need to adjust



SPECIFICATION

Measuring range	±30°
Resolution	0.1°, 0.01°, 0.1mm/m
Accuracy	±0.03° (range 0~3°) ±0.05° (range >3°)
Power supply	rechargeable battery
Dimension	115×66×25mm
Weight	224g

STANDARD DELIVERY

Main unit	1 pc
USB cable	1 pc

OPTIONAL ACCESSORY

Software	ISE-2DT-SOFTWARE
----------	------------------

PC software (optional), send data to txt

