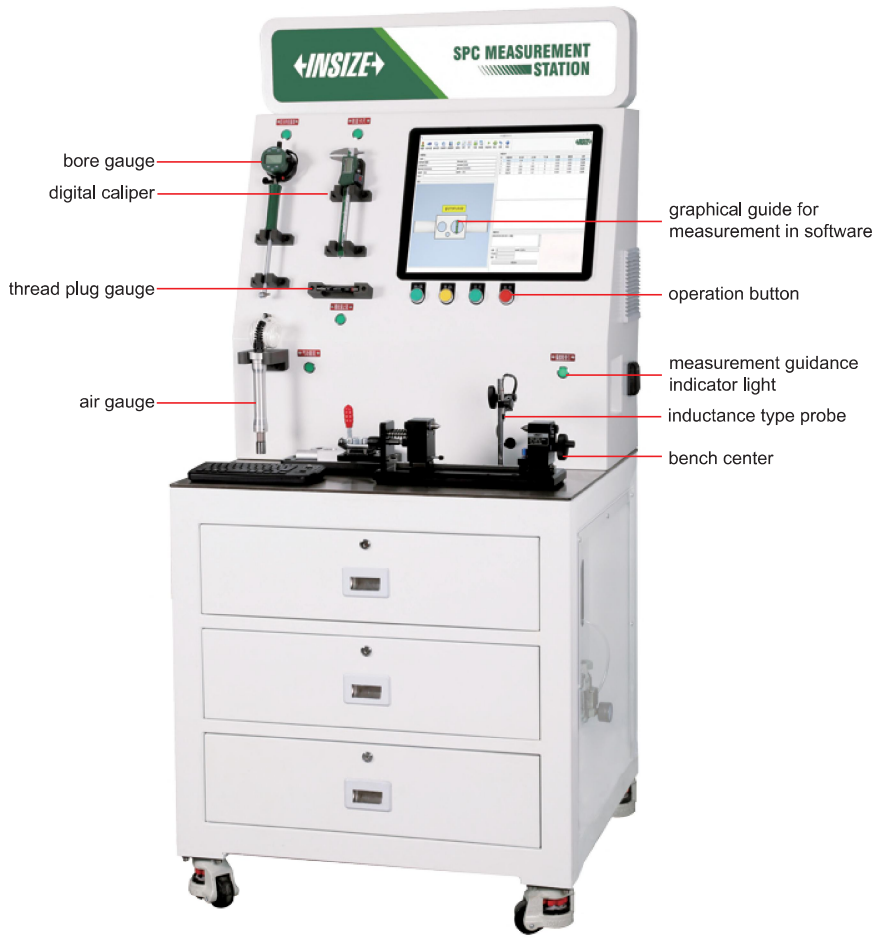


SPC MEASUREMENT STATION CODE CMW-□□□

CUSTOMIZED ACCORDING
TO WORKPIECES



- **Flexible instrument configuration:** selection of air gauges, inductive probes (LVDT), and measuring tools (e.g., digital calipers, micrometers, digital Indicators) and Go/No-Go gauges based on specific requirements
- **Visual software guidance:** graphical interface functionality that provides step-by-step instructions and highlights the specific location of each dimension to be measured
- **Light indicator guidance:** signal lights to guide the operator to the specific gauge or instrument required for each measurement step
- **Data analysis & reporting:** software equipped with modules for real-time data processing and professional report generation

Optional measuring tools and instruments



air gauges



inductance probes



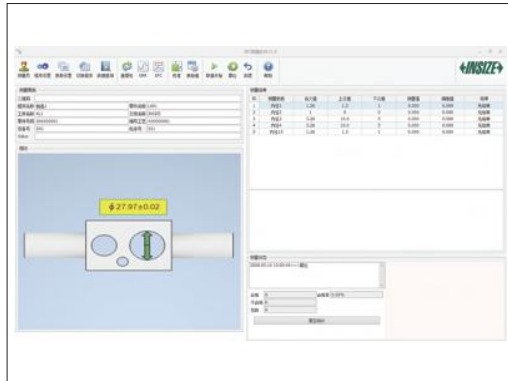
measuring tools



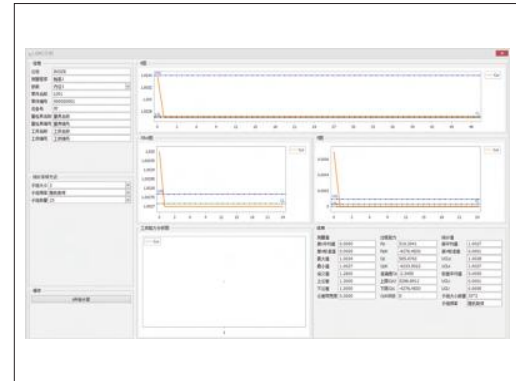
Go/No-Go gauges

SPC software (customizable)

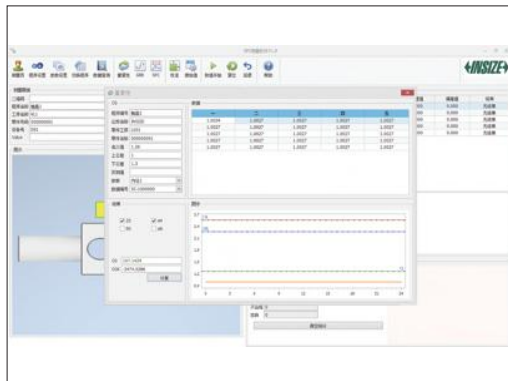
- **Visualized measurement process management:** capability to program and sequence measurement steps with a visual workflow
- **Integrated professional analysis tools:** built-in modules for MSA (measurement systems analysis), including Cg/Cgk (gauge capability), GR&R (gauge repeatability and reproducibility), and comprehensive SPC (statistical process control) analysis
- **Advanced data processing:** robust features for mathematical statistics, trend analysis, automated chart plotting (e.g., X-bar & R charts), data storage, export, and backup
- **Real-time tolerance feedback:** the system simulates measurement results against preset tolerances, providing immediate "Pass/Fail" feedback through a color-coded interface (e.g., green for OK, red for out of tolerance)
- **Seamless data integration:** supports data export to Excel and features a native interface for seamless synchronization with the Q-DAS database (e.g., AQDEF format)
- **Station access control:** comprehensive user permission management and station-level security to ensure data integrity, authenticity, and traceability



measurement interface



SPC analysis



CG analysis



GRR analysis