

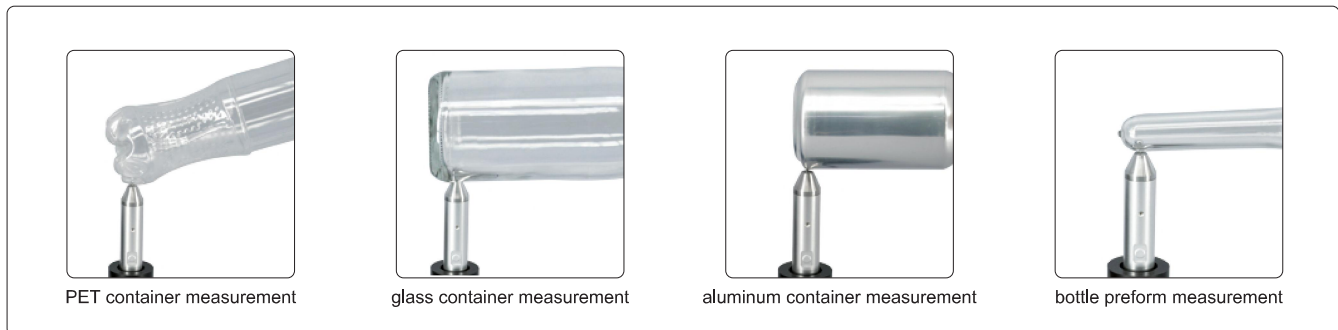
HALL-EFFECT THICKNESS GAUGE

CODE 5408-HE25



- Non-destructive measurement of thickness for non-magnetic materials such as plastic, glass, aluminum, titanium, and synthetic materials; measurement accuracy unaffected by material shape
- Automatic or manual degaussing and zeroing before testing ensures measurement accuracy
- Real-time display of measurement results and automatic capture of maximum and minimum values
- Difference mode displays the difference between actual thickness and preset reference thickness
- Timed measurement mode records maximum, minimum, average values, and curves within preset intervals
- Upper and lower limits can be set, over-limit alarm alert
- Measurement results can be stored in memory and the optional software enables statistical analysis and exporting report
- Parameter settings and measurement data are protected by administrator password
- 7-inch color touchscreen

MEASUREMENT APPLICATION



SPECIFICATION

Range *	determined by the calibration performed with standard gauge blocks
Accuracy	see the table below
Resolutoin	high: 0.001mm, low: 0.01mm
Unit	mm, inch
Calibration mode	single-point calibration, multi-point calibration
Storage	4950
Data transmission	RS232
Power supply	12.6V rechargeable Li-ion battery or power adapter
Dimensions (L×W×H)	210×150×65mm
Net weight	2050g

* need to buy the gauge blocks and steel ball set

SPECIFICATION OF MAIN UNIT

Accuracy of single-point calibration	Accuracy of multi-point calibration	Minimum measuring area radius	Suggested measuring range
5%+0.003mm (calibrated with 1.59mm steel ball)	3%+0.003mm (calibrated with gauge blocks and 1.59mm steel ball)	0.79mm	0~2mm
4%+0.003mm (calibrated with 3.18mm steel ball)	2%+0.003mm (calibrated with gauge blocks and 3.18mm steel ball)	1.59mm	0~4mm
3%+0.003mm (calibrated with 4.76mm steel ball)	1%+0.003mm (calibrated with gauge blocks and 4.76mm steel ball)	2.38mm	0~4mm or 0~6mm
3%+0.003mm (calibrated with 5.00mm steel ball)	1%+0.003mm (calibrated with gauge blocks and 5.00mm steel ball)	2.45mm	1~8mm or 1~10mm

GAUGE BLOCKS AND STEEL BALLS SET (OPTIONAL)

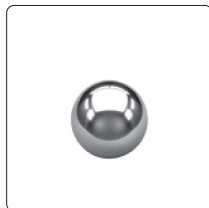
Code	Range	Gauge blocks	Radius of steel balls
5408-T4	4mm	0.23mm, 0.5mm, 1.0mm, 1.5mm, 2.0mm, 2.5mm, 3.0mm, 3.5mm, 4.0mm	1.59mm, 3.18mm, 4.76mm
5408-T6	6mm	0.23mm, 0.5mm, 1.0mm, 1.5mm, 2.0mm, 2.5mm, 3.0mm, 3.5mm, 4.0mm, 4.5mm, 5.0mm, 5.5mm, 6.0mm	1.59mm, 3.18mm, 4.76mm
5408-T8	8mm	0.23mm, 0.5mm, 1.0mm, 1.5mm, 2.0mm, 2.5mm, 3.0mm, 3.5mm, 4.0mm, 4.5mm, 5.0mm, 5.5mm, 6.0mm, 6.5mm, 7.0mm, 7.5mm, 8.0mm	3.18mm, 4.76mm, 5.00mm
5408-T10	10mm	0.23mm, 0.5mm, 1.0mm, 1.5mm, 2.0mm, 2.5mm, 3.0mm, 3.5mm, 4.0mm, 4.5mm, 5.0mm, 5.5mm, 6.0mm, 6.5mm, 7.0mm, 7.5mm, 8.0mm, 8.5mm, 9.0mm, 9.5mm, 10.0mm	3.18mm, 4.76mm, 5.00mm

STANDARD DELIVERY

Main unit	1 pc
Probe	1 pc
RS232 cable	1 pc
Foot switch	1 pc
Power adapter	1 pc

OPTIONAL ACCESSORY

4mm gauge blocks and steel balls set	5408-T4
6mm gauge blocks and steel balls set	5408-T6
8mm gauge blocks and steel balls set	5408-T8
10mm gauge blocks and steel balls set	5408-T10
Software (dongle included)	5408-SW



steel ball (optional)



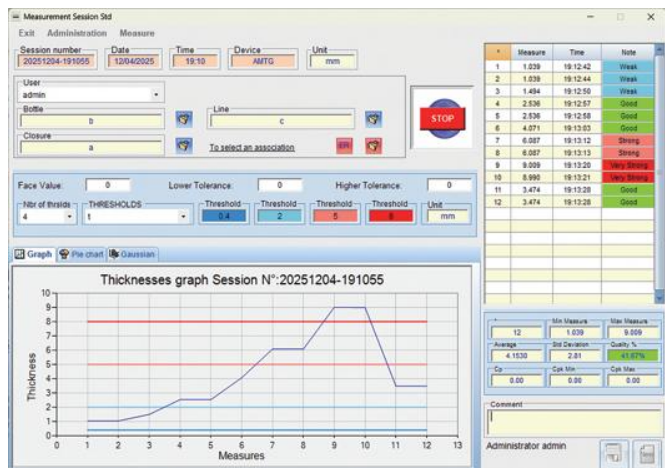
steel ball support (optional)



gauge block (optional)



foot switch (included)



software (optional)