

COATING THICKNESS GAUGES (STANDARD TYPE)

- Separate probe, suitable for both magnetic and non-magnetic metal substrates
- Can measure the thickness of non-magnetic coating and non-metallic coating on magnetic metal substrate
Substrate: iron, steel, magnetic stainless steel
Coating: zinc, aluminum, copper, chrome, tin, plastic, powder, paint (not for nickel)
- Can measure the thickness of non-conductive coating on non-magnetic metal substrate
Substrate: copper, aluminum, zinc, non-magnetic stainless steel
Coating: plastic, powder, paint, anodizing (not for chrome and zinc plating)
- Upper and lower limits can be set, over-limit alarm alert
- Data statistics and chart analysis
- 2.4-inch rotatable color screen



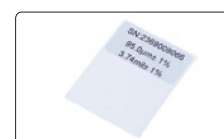
ruby probe



Fe zero calibration plate
(included)



NFe zero calibration plate
(included)



standard foil
(included)



paint inspection



film thickness measurement



antirust paint layer measurement

STANDARD DELIVERY

Main unit	1 pc
Probe	1 pc
Fe zero calibration plate	1 pc
NFe zero calibration plate	1 pc
Standard foil	1 set
1.5V AA battery	2 pcs

SPECIFICATION

Code	5407-QM25	5407-QM26	5407-QM27
Measuring range	0~2000µm	0~3000µm	FE mode: 0~5000µm, NFE mode : 0~3000µm
Measuring principle	FE mode: magnetic induction NFE mode: eddy current effect		
Calibration mode	zero calibration, multi-point calibration		
Accuracy	±(2%L+1µm): ≤1500µm ±(3%L+2µm): 1500µm~3000µm ±(5%L+2µm): ≥3000µm, L is measuring thickness in µm		
Resolution	0.1µm (<100µm), 1µm (≥100µm)		
Minimum curvature radius	convex: 5mm; concave: 25mm		
Minimum measuring area	Ø15mm		
Minimum substrate thickness	FE: 0.2mm; NFE: 0.1mm		
Storage	1300		
Operation environment	temperature: -10°C~50°C; humidity: 20%~90% (non-condensing)		
Unit	µm, mm, mil, inch		
Language	English, Chinese		
Power supply	2×1.5V AA batteries		
Dimension (L×W×H)	main unit: 147×77×33mm, probe: Ø17×67mm		
Net weight	main unit: 135g (exclude battery), probe: 63g		