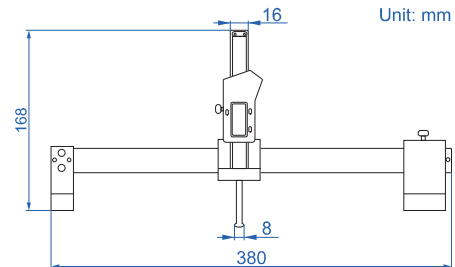


POINT RAIL LOWERING GAUGE CODE 4986-100

DATA
OUTPUT



- To measure the lowering values of switch rail and point rail
- Button: zero, on/off, mm/inch, data preset
- Made of stainless steel
- Battery CR2032
- Operation temperature: 0°C~40°C
- Optional accessory: data output cable (code **7302-22**), wireless transmitter (code **7315-22**, receiver is needed, code **7315-2/3/6/7/8/9**)



SPECIFICATION

Range	Resolution	Accuracy	Repeatability	Net weight
-10~40mm/-0.4~1.6"	0.01mm/0.0005"	±0.1mm	0.03mm	1.1kg