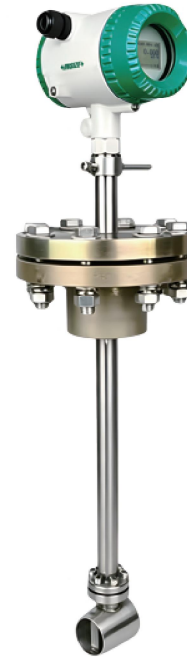


# INSERTION VORTEX FLOWMETERS

CODE 0914-□□□□□□□□□□

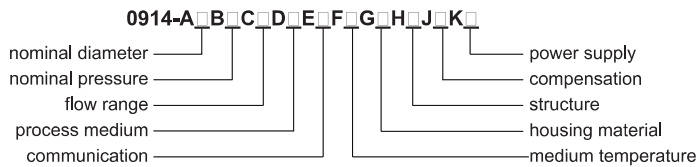
CUSTOMIZABLE

- Suitable for flow measurement of various media including gases, liquids and steam in large bore industrial pipelines
- Measures and displays total flow, instantaneous flow, and percentage of full scale
- Low pressure loss, structurally stable, and easy to install and maintain
- Outputs a pulse frequency signal with strong interference resistance
- Stable performance and long service life



0914-A4B2C1D3E1F1G1H1J1K1

### Code explanation:



### Code example:

0914-A4B2C1D3E1F1G1H1J1K1	<b>A4</b> -nominal diameter: DN200
	<b>B2</b> -nominal pressure: DIN PN10
	<b>C1</b> -flow range: standard range
	<b>D3</b> -process medium: general gas
	<b>E1</b> -communication: RS485
	<b>F1</b> -medium temperature: -40°C~250°C
	<b>G1</b> -housing material: SUS304
	<b>H1</b> -structure: integrated
	<b>J1</b> -compensation: without
	<b>K1</b> -power supply: DC24V

**SPECIFICATION**

<b>Structure</b>	integrated	separated (standard cable length 10m, customizable)
<b>Process medium</b>	liquid, gas, steam	
<b>Measuring range ratio</b>	1:10 (standard air condition as reference), 1:15 (liquid)	
<b>Flow range</b>	standard range, extended range (optional)	
<b>Velocity</b>	liquid: 0.4m/s~7.0m/s, gas: 4.0m/s~60.0m/s, steam: 5.0m/s~70.0m/s	
<b>Accuracy</b>	±2.5%	
<b>Nominal diameter</b>	DN100~DN300	
<b>Connection type</b>	insertion	
<b>Nominal pressure</b>	DIN PN6/PN10/PN16 ANSI 150# JIS 5K/10K/16K (optional, other pressures are customizable)	
<b>Housing material</b>	SUS304, SUS316 (optional)	
<b>Signal output (volumetric flow)</b>	current: 4mA~20mA (passive output), pulse (passive output)	
<b>Communication</b>	RS485, HART (optional)	
<b>Medium temperature</b>	-40°C~250°C, -40°C~350°C (optional)	
<b>Protection grade</b>	IP65 transmitter+IP65 sensor	
<b>Compensation</b>	without, with temperature and pressure compensation (optional)	
<b>Power supply</b>	DC24V, 3.6V lithium battery, AC110V~240V, 50/60Hz (optional)	
<b>Operation condition</b>	temperature: -20°C~65°C, humidity: 5%RH~85%RH, atmospheric pressure: 86kPa~106kPa	

**NOMINAL DIAMETER**

<b>A1</b>	DN100
<b>A2</b>	DN125
<b>A3</b>	DN150
<b>A4</b>	DN200
<b>A5</b>	DN250
<b>A6</b>	DN300

**FLOW RANGE**

<b>C1</b>	standard range
<b>C2</b>	extended range

**HOUSING MATERIAL**

<b>G1</b>	SUS304
<b>G2</b>	SUS316

**PROCESS MEDIUM**

<b>D1</b>	saturated steam
<b>D2</b>	superheated steam
<b>D3</b>	general gas
<b>D4</b>	liquid

**STRUCTURE**

<b>H1</b>	integrated
<b>H2</b>	separated (converter display)
<b>H3</b>	separated (flow totalizer remote display)

**NOMINAL PRESSURE**

<b>B1</b>	DIN PN6
<b>B2</b>	DIN PN10
<b>B3</b>	DIN PN16
<b>B4</b>	ANSI 150#
<b>B5</b>	JIS 5K
<b>B6</b>	JIS 10K
<b>B7</b>	JIS 16K

**COMMUNICATION**

<b>E1</b>	RS485
<b>E2</b>	HART

**COMPENSATION**

<b>J1</b>	without
<b>J2</b>	with temperature and pressure compensation

**MEDIUM TEMPERATURE**

<b>F1</b>	-40°C~250°C
<b>F2</b>	-40°C~350°C

**POWER SUPPLY**

<b>K1</b>	DC24V
<b>K2</b>	3.6V lithium battery
<b>K3</b>	AC110V~240V, 50/60Hz (flow totalizer remote display)

**FLOW RANGE**

Nominal diameter	Liquid (Reference medium: normal temperature water)		Gas (Reference medium: Gas at 20°C and 1013.25 hPa)	
	standard range (m³/h)	extended range (m³/h)	standard range (m³/h)	extended range (m³/h)
<b>DN100</b>	12~200	8~250	120~1200	100~2000
<b>DN125</b>	20~300	12~400	160~1600	150~3000
<b>DN150</b>	30~400	18~600	250~2500	200~4000
<b>DN200</b>	50~800	30~1200	400~4000	350~8000
<b>DN250</b>	80~1200	40~1600	600~6000	500~12000
<b>DN300</b>	100~1600	60~2500	1000~10000	600~16000